



JANUARY 1964

Evreux Fauville Base Guide

EVREUX-FAUVILLE AIR BASE
UNITED STATES AIR FORCES IN EUROPE
EVREUX (EURE) FRANCE

Office of the Commander


To those of you who are about to come to Evreux-Fauville Air Base and to those of you who have already arrived, I wish to extend an enthusiastic welcome.

This booklet has been written to give you an idea of what living and working here is like. Within a month after your arrival, more information will be given to you in an orientation briefing, where you will be able to ask the questions which might arise as you read the booklet.

Working conditions are pleasant here and recreational possibilities excellent, but whether you enjoy your tour depends to a large extent on you. I strongly urge you to take the fullest advantage of this opportunity to live in France by learning the French language and by seeing as much of this scenic country as possible.

Get to know the French people. Those who have learned French and have French friends enjoy their tour here much, much more than those who do not.

Again, I extend to you a most cordial welcome, and I hope you make this tour at Evreux-Fauville Air Base a most profitable one for yourself.


CLARENCE M. CALDCLEUGH
Colonel, USAF
Base Commander



MISSION OF THE BASE

There are three main organizations at Evreux, not counting certain smaller tenant units. They are the 322d Air Division, the 317th Troop Carrier Wing, and the 317th Combat Support Group. The local housekeeping unit is the 317th Combat Support Group. Its commander is often called the base commander. The mission of the group is to provide for the operation and maintenance of Evreux-Fauville Air Base. Few support organizations in this theater have the same extensive operational control and responsibility as the 317th Combat Support Group, for Evreux is one of the most active air installations over here.

The support group is part of a larger organization, the 317th Troop Carrier Wing, whose mission is to provide air transport for U.S. and Allied country government agencies, as directed by USAFE. This air transport takes the form of (1) regular scheduled air supply runs throughout Europe, Africa, and the Middle East, (2) joint training exercises with U.S. Army and Allied airborne troops, (3) aeromedical evacuation service, (4) mercy missions to disaster-stricken areas, and (5) special, unscheduled missions of many sorts. The aircraft used by the 317th Wing is the versatile C-130 Hercules turboprop, which is capable of carrying 96 troops or 18 tons of cargo.

The wing is assigned to the 322d Air Division, also headquartered at Evreux. This air division, also commands other organizations and other bases, including Chateauroux, Rhein-Main, Berlin Tempelhof, and the stand-by base of Dreux.

At the time of this booklet's publication, plans were announced to move the division's headquarters to Chateauroux, where it would become part of the MATS organization, and to move the 317th Troop Carrier Wing to Lockbourne AFB, Ohio.

EFAB FACILITIES

CONTRIBUTION MOBILIERE

If you do not live on the air base, you will probably be subject to the Contribution Mobilier. The Contribution Mobilier is a general revenue for the benefit of municipalities and departments levied upon the occupancy of each dwelling. The revenue is used for local and departmental needs.

By a 1953 decision of higher authority (the State Department) based on statements made in 1951 by the originators of the NATO Status of Forces Agreement, U.S.A.F. military personnel became obligated to pay the tax.

Tax is assessed as of Jan. 1 for each year. Statements are generally received in late summer and must be paid by the middle of October. If any dwellings are initially occupied after Jan. 1 of a given year, the tenant is not obligated to pay the Contribution Mobilier for that year, unless liability is assumed by private agreement with a departing tenant.

French tax is computed as follows: The difference between the basic rental value (loyer matriciel brut) and reductions based on the total number of children in a family (abattements) is multiplied by the fixed rate. The basic rental value is not a constant figure and will vary according to the size of the city and village, the number of rooms and windows in the dwelling, etc.

Reductions for each child and the tax rate itself vary according to the location of the dwelling. In some smaller villages no reduction for children is granted. Evreux permits a 60F reduction per child. When this is multiplied by a tax rate of 24.60F, a reduction of about \$3 per child is realized.

If your Contribution Mobilier appears high, inquiry should be made of the inspector whose name, address and visiting hours appear on the reverse side of the bill.

FRENCH LIAISON OFFICE

All non-military personnel residing in France are required to have a French Identification card. ID cards are obtained from the French Liaison Office in building 451.

Other types of French identification as hunting and fishing licenses, may be obtained from this same office.

A visit to the French Liaison Office within eight days after arrival is required for all dependent personnel, in order that paperwork for the ID card may be processed as soon as possible. This card must be renewed each year and any change of address is to be reported to the liaison office.

YOU AND THE FRENCH

Americans stationed in France do not enjoy special exemptions from the laws of the country. Flouting the laws of France may be cause to spend some time in the courts of France. However, military members do enjoy some special privileges under the NATO treaty. For example, you are exempt from some taxes, such as gasoline and cigarette tax.

In addition to the criminal law of France, American personnel may come into contact with the law governing civil transactions, such as leases, car purchases, and repairs and similar ventures.

Evreux's Staff Judge Advocate maintains a legal assistance program which is designed to alleviate and avoid many of the problems that may be encountered.

Office hours are from 1 to 5 p.m., Monday through Friday, in the Group Headquarters, building 451.

PRIVATE AUTOMOBILES

Personnel expecting privately-owned automobiles from the States will be notified of the location and availability date for pick-up by the Base Traffic Management Officer.

Vehicles destined for personnel assigned to France are normally shipped to St. Nazaire. Prior to notification, personnel expecting a vehicle from the States must register for CF plates. If the vehicle arrives in Germany, it must be driven to this base with stateside plates, then registered in the CF system.

Upon notification of arrival of vehicle at the port, personnel are authorized, at no expense to the government, five days TDY to Bremerhaven, Germany, or three days TDY to St. Nazaire for the purpose of picking up their cars.

ARRIVAL AT PORT

In rare instances, when automobiles from the States are shipped to Bremerhaven, Germany (e.g., a person receiving a last minute change of orders from Germany to France) personnel should check with Vehicle Registration office and Traffic Management office, for specific instructions.

Prior to departing for pick up of their vehicles, personnel must have their registration completed and checked with Vehicle Registration for any changes in policy.

The Traffic Management Office will receive advance notification of privately owned vehicles arriving from the Port of Embarkation. POV's shipped from Brooklyn or Philadelphia normally take from four to six weeks. Shipments from New Orleans take from six to eight weeks.

Those applicants having a stateside driver's license are required to pass a written examination and an international road sign test before being issued a COMZ operator's permit. In addition, all personnel 26 years of age or under must attend a 40-hour compulsory driver's class at the Base Driver's School. Drivers possessing a valid driver's permit issued in Germany, cannot lawfully operate an automobile registered with CF plates.

REGISTRATION

The following documents are required to register a vehicle arriving at the port, under the CF system: Proof of ownership (title or registration certificate), bank draft or money order (made out to AMEXCO), valid proof of insurance and COMZ operators permit. Lower four graders must have written authorization from the base commander to own a private vehicle. Only two vehicles may be registered in the CF system at one time. Vehicles must be registered for six months before they can be sold.

All personnel are reminded that failure to re-register a privately owned vehicle, on or before the expiration date as shown on AEZ Form 19-11, Registration certificate (Gas Card), may result in the assessing of two to 12 points, reference EFAB Supplement 1 to AFR 125-14.

FAMILY HOUSING AT EVREUX-FAUVILLE AIR BASE

GUARANTEED RENTAL



La Madeleine

Guaranteed rental units, built by the French to American standards, are one story and are divided into two or four apartments each with two or three bedrooms. A stove and six-cubic foot refrigerator is furnished with each unit.

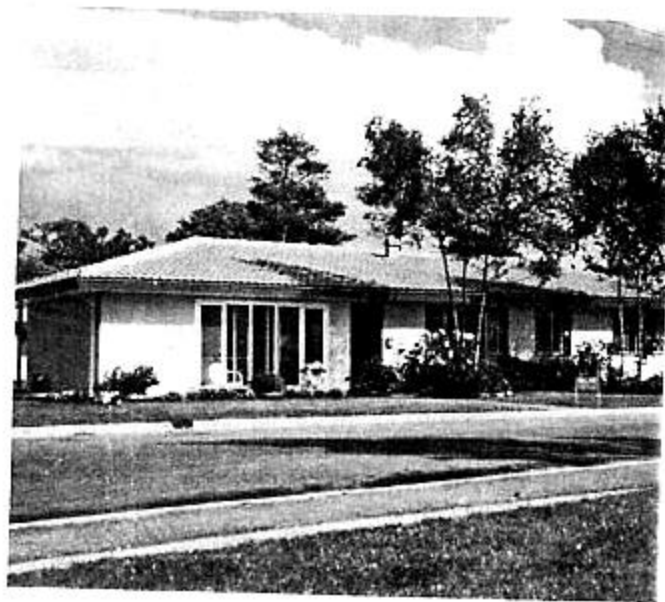
The apartments are heated by a forced-air central fuel-oil system. Hot water for bathing and washing is supplied by an electric water heater.

The electrical current is 220v, 50 cycles and require transformers for American 110v appliances. Those appliances with 60-cycle motors often require motor rewinding or motor change. Rent, according to the size of the unit, runs from \$85 to \$100 per month, plus utilities. Occupants receive a housing allowance according to grade, size of the unit, etc.

OFF-BASE HOUSING

The off-base housing consists of three types: Guaranteed Rental, Commodity Housing and Private Rental. Guaranteed Housing includes three housing projects: La Madeleine (244 units, five miles from the base), Saint Remy (36 units, 20 miles from the base) and Dreux Housing (280 units, 30 miles from the base).

The latter units are designed for temporary housing until quarters are available in the local area. Of commodity housing, there is one area only, La Fayette Village, 175 units, seven miles from the base. The third type, private rental, is discussed in a following paragraph.



Lafayette Village

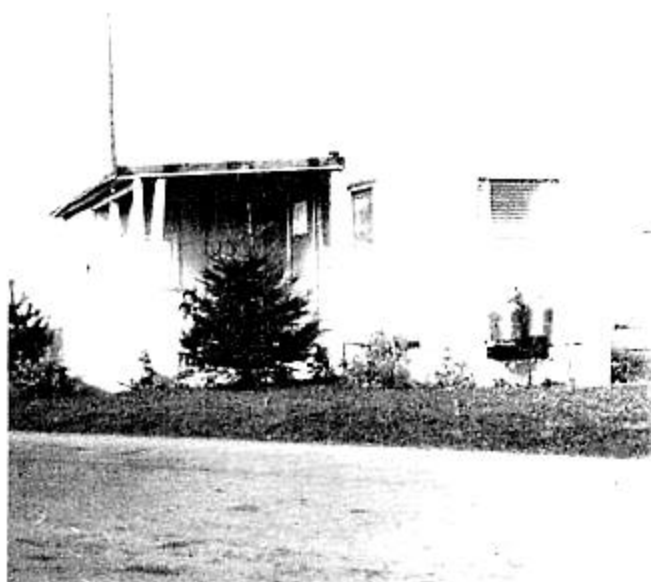
HOUSING AT EVREUX

Your major concern, especially if you have a family, will probably be housing. There are presently six types of housing available.

TEMPORARY ACCOMODATIONS

Transient quarters are available for sponsors, and their dependents, in the form of sixteen guest trailers at Evreux, and 50 guest trailers at Dreux Air Base. In addition, the hotel space in Evreux amounts to about 150 rooms. Not all have baths and toilets. Rooms range from 10 new francs (\$2.10) to 20 new francs (about \$4.20) per night.

If you are not married or accompanied by your dependents, you will find ample quarters in barracks, BAQs and BOQs on base.



PRIVATE TRAILERS

In addition to the government trailers on the base, there are also 147 privately owned trailers. Since the trailer park is full, no additional trailers may be moved into the park.

A private trailer is bought from its present owner when the latter rotates or is transferred. All trailer purchases must be cleared through the Base Housing Office, building 193, telephone 6280.

PRIVATE RENTAL

Private rentals (French economy) are in great demand and in short supply. These houses, owned privately by French civilians sometimes need considerable work (plumbing, electricity, painting, etc.) before they are as comfortable as stateside homes.

When renting such a house, be sure to inspect the above items so as to avoid the surprises which may ultimately lead to bad Franco-American relations. It is only common sense to follow this procedure. Some American tenants have spent from \$300 to \$1200 in an effort to obtain comfort.

Leases generally run for one or two years and should be checked at the base Housing Office and the Legal Office.



COMMODITY HOUSING

Commodity housing is to be found at La Fayette Village. These units feature radiantly heated two, three, and four bedroom duplexes, allocated on a pro-rata basis to officers and airmen. Each unit has storage space, but no garage. They are unfurnished except for a stove, washer, dryer, and refrigerator. The electrical current is 110v and 50 cycles, and does not require use of transformers.

EFAB FACILITIES



MAIL PICK-UP

POSTAL SERVICES

A Consolidated Mail Room (CMR), located in building 411, has 3,537 combination lock type boxes which are assigned to personnel stationed at Evreux. The lobby of the mail room is open 24-hours daily and allows mail to be picked up at the receivers' convenience.

When personnel receive orders assigning them to this base, they should request their sponsor to obtain a post office box for them. If a sponsor is not assigned, the assignee should contact the personnel officer at Evreux, send a copy of his orders, and request a post office box.

Upon receiving notification of a box assignment, personnel should notify correspondents and publishers well in advance (at least six weeks) of their transfer. Change of address forms, DD Form 1175, may be obtained from any post office.

Operating hours and complete information on mail service may be obtained when personnel arrive at Evreux-Fauville AB.

BASE LIBRARY

The Base Library is your public library overseas, and welcomes personnel at any time between 11:30 am and 10 pm daily, including weekends and holidays.

Evreux's library has 19,000 books for leisure time reading, as well as for study. Also available are the best sellers and many other new books; more than 200 magazines and newspapers include European editions of American publications, French, Swiss and British periodicals. American magazines, both general and technical; five French newspapers, and the London Times, are available.

The library has a music room with 1856 recordings of music, drama, children's, and language-learning sets.

In the library is an attractive children's room with 2500 books. A popular story hour for 4-8 year olds is held once a week and is well attended.



EVREUX'S LIBRARY

EDUCATIONAL OPPORTUNITIES

Education services at Evreux-Fauville fall under three headings: The base on and off-duty programs, open to military personnel and civilian employees of the government and their dependents; the American Dependent Schools for children (kindergarten through the eighth grade); the Dreux American High School, grades 9 through 12, where high school students live in dormitories from Monday through Thursday nights.

The off-duty education program offers fully credited college courses, with the University of Maryland.

Credit for these courses may be transferred to any stateside liberal arts college or university.

Off-duty classes are also taught in refresher high school, spoken French, and technical courses. The staff at the Education Center assists airmen in obtaining high school diplomas or equivalent certificates after they have successfully completed the GED tests.

On-duty courses include spoken French for officers, taught by the most modern methods in the best language laboratory on an air base in Europe, typewriting for airmen is also conducted during duty hours.

A final service offered by the Education Center is that of correspondence courses. Through USAFI, students may take a wide range of academic courses, most of which carry acceptable college or high school credit, as established by the American Council of Education.

Through ECI, officers and airmen may take correspondence courses in their specialties, the successful completion of which is entered on their form 7 or 11.

The Education Center is located in building 188, and is open from 8 am to 5 pm.

FAMILY SERVICES

The Family Service Center assists in the relief of personal problems encountered by Air Force personnel and their families. The Center is located in building 119, just south of the base chapel.

Although the program is designed primarily to assist families, its services are available to single personnel who have need of assistance.

Services available include a loan closet, a reference library of stateside bases, CHAP facilities, and a dependent orientation lecture. The loan closet contains housekeeping essentials such as dishes, silver ware, coffee pots, and other utensils.

Volunteer wives, both officer and enlisted, operate the center and share equally in the responsibilities of all the committees.

The Family Service Center telephone number is 6351.



BASE CHAPEL

LUTHERAN

Lutheran Holy Communion is held the first Sunday of each month in the chapel annex at 5 pm.

JEWISH ACTIVITIES

Jewish Sabbath evening services are conducted in the chapel annex every Friday and includes a children's service once each month. Jewish Religious School is held every Thursday at 3:30 and 5 pm in the chapel annex. A Sunday morning brunch discussion group is held on the last Sunday of the month at 10 am in the Service Club.

CATHOLIC MASSES

Catholic masses are held 9 am and 12:12 each Sunday; on the first Friday 6:45 and 12; Saturday 8:45 am; daily masses 6:45 am Tuesday through Friday; confessions are heard Saturday 5 to 6 pm, and 7 to 8:30 pm.

Catechism classes meet 8:30 every Saturday in the Base Dependent School. Christian Mothers meet in the chapel annex each Wednesday before the first Sunday of the month; the Holy Name Society Holy Communion meets the second Sunday of each month.

GENERAL PROTESTANT

General Protestant services are held each Sunday at 10 and 11 am. Vesper services are held at 7 pm on Sundays.

Sunday School for the nursery through the adult group is held at the St. Michel Dependent School 9:45 am each week. Protestant Women of the Chapel meet at 9:30 am the second Friday of each month in the chapel annex.

CHURCH OF CHRIST

Church of Christ services are held 9 am each Sunday in the Mobile Training Detachment building 458. The Church of Jesus Christ of Latter Day Saints Sunday School is held 9:30 am in the American Youth Association Center. Church of Jesus Christ Priesthood meetings are also held in the center at 11 am; sacrament meetings are held in the chapel at 5 pm each Sunday.

EPISCOPAL SERVICES

Episcopal Confirmation classes are held each third Wednesday of the month at 4:30 pm in the chapel. Episcopal Communion is held 5:30 pm on the third Wednesday of

HOUSEHOLD GOODS AND BAGGAGE

Incoming and outgoing unaccompanied baggage and household goods are processed through the traffic management office in building 247. All packing and crating, and delivery and unpacking are performed by a French firm.

Transit times for household goods from this station is 60 to 90 days. Unaccompanied baggage usually arrives at this station at about the same time as the individual.

Past experience has shown that families should pack sheets, towels, silverware and kitchen utensils in sufficient quantities to fulfill their needs for a period of three or four months from date of shipment.

Information concerning baggage arrival may be obtained by calling base Ext. 6264--6292, Monday through Friday, between 9 a.m. and 4 p.m.

NON-COMBATANT EVACUATION OFFICE

To insure that dependent personnel are moved quickly and without complications in the event of an emergency, it is necessary to have information about each family available in the NEO office.

Upon arrival at Evreux, all military members will be required to process through the NEO office and provide them with passport numbers, automobile license numbers, overseas address, and have identification tags made for their dependents.

Complete instructions and a pamphlet will be distributed to personnel when they process.

AMERICAN RED CROSS

An American Red Cross unit has a field office located in Building 109, on the base. This office provides assistance to personnel, their dependents, all government civilian employees and their dependents in the vicinity of Evreux-Fauville Air Base.

Functions of the Red Cross Chapter at Evreux AB are to promote volunteer programs which include the Gray Ladies, Staff Aides, Nursing Service Program, First Aid and Base Water Safety classes.

It is important that you as an individual advise your families and near relatives that in case of any emergency, your family should contact their local Red Cross chapter immediately.

It is to your advantage to make sure that all members of your family know your full address, including your rank, service number, military organization and APO.

The Red Cross office operates on a 24-hour basis with normal duty hours from 8 am to 12 noon -- 1 to 5 pm Monday through Friday. Saturday the office is open from 8 am to 12 noon. An emergency worker is on call during weekends, nights and holidays. He may be contacted by calling the base switchboard operator after duty hours.

BANKING FACILITIES

Complete banking facilities are available at the branch office of the Bank of America, located in building 400.

Services offered include a checking and savings accounts, money orders, sale of French francs, also personal and certified checks, and a loan department. These services are available from 9:30 a.m. until 3 p.m. Monday through Friday. Telephone Ext: 6365 or 6451.

RECREATION CENTER

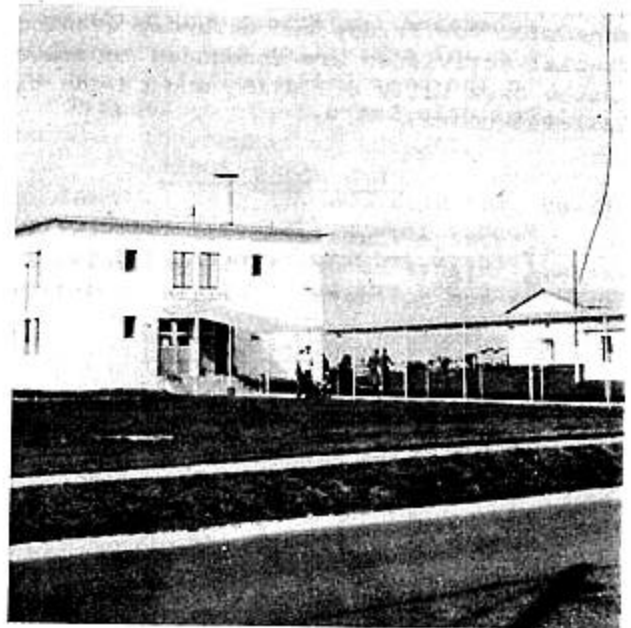
The base Recreation Center is located in building 135, directly opposite the "Le Petit" theater. With approximately 19,000 square feet of usable floor space, the center is divided into a lounge, ballroom, poolroom, kitchen, music and card games room, and an arts and crafts area. A photo hobby shop is projected for the near future.

The Service Club conducts tours to Paris and interesting sights several Saturday mornings each month; they are free of charge.

Two dances are held each month on Sundays, at 4 pm. Each Monday and Thursday, a travel agent is on hand from 12:30 to 5:30 pm to provide all necessary travel information and assistance.



Normandy



Le Petit

THEATERS

Movie fans will find two theaters at Evreux-Fauville Air Base. The Normandy, located on 4th street, has 18 performances weekly. Showtimes are Monday through Friday 6:30 and 9 pm; Saturday and Sunday, 12:30, 3:30, 6:30 and 9 pm.

The Le Petit theater offers 17 performances each week. A daily matinee is featured at 1 pm; evening shows are at 7 pm. Each Saturday there are two kiddie matinees, 10 am and 3:30 pm; an evening show begins at 6:30 pm. On Sundays, the performances are 3:30 and 6:30 pm.

If a certain movie is missed at the Normandy theater, it can be seen approximately three weeks later at the Le Petit theater.

Movie schedules are distributed at all base recreational facilities.

CLUBS ON BASE

AIRMEN'S CLUB

The "Hercules Club" (for Airmen) is an annex of the NCO Open Mess, and is located in building 384. Airmen in grades through E-4 are members upon payment of \$1.00 dues per year. Limited credit is available.

The Hercules Club features dance music every night except Monday. Floor shows are scheduled for Friday and Saturday evenings. Special activities are announced to members in the base Daily Bulletin and on the club bulletin board.

CLUB HOURS

Monday through Thursday.....5 to 11 pm
Fridays, nights before holidays..5 to 12 pm
Weekends and holidays.....12 to midnight

DINING HOURS

Monday through Friday.....5 to 10 pm
Weekends and holidays.....noon to 10 pm



Telephone extension for the Hercules Club is 6444. Inquiries pertaining to the club should be referred to the custodian of the NCO Open Mess, telephone 6400 or 6460.

AERO CLUB

Boasting a membership of 45 active members, the Evreux Aero Club is considered one of the finest aero clubs in Europe. Located adjacent to the base operations in building 282, the club is open to all personnel interested in flying.

The base organization presently has an Aeronca, a Cessna 140, and a Cessna 170. The 140 and Aeronca are used for student training and local flights. The Cessna 170 is mainly utilized for family outings and cross-country trips.

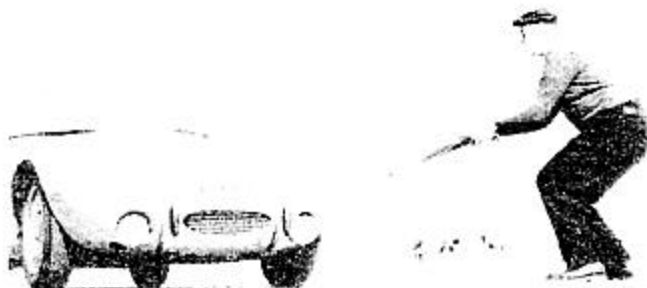
Costs for renting the aircraft vary from \$5. for the two smaller planes, to \$7. for the Cessna 170. Instructions are available for people who want to learn to fly and for those who desire to be upgraded.



SPORTS CAR CLUB

Sports cars enthusiasts assigned to Evreux-Fauville AB will find an invitation waiting for them to join the Ecurie Normandy Sports Car Club. Qualification for becoming a member of the club is not restricted to sports car owners. Membership is open to all personnel who are interested in the activities associated with such an organization.

Club rallies are held twice monthly and time trials are held twice yearly. Information pertaining to the club's activities may be obtained by calling the Evreux Sports Center.



THRIFT SHOP

The Evreux Thrift Shop is located in building 234. It is operated by members of the Officers and NCO Wives Clubs and serves as a trading post where base personnel sell or purchase used items. Operating hours are from 10 am to 4 pm Tuesdays and Fridays.

Upon receipt at the Thrift Shop, articles are placed on sale for two months, at a price set by the owner. A ten per cent commission is added to this price. If the article is not sold within two months, the price is reduced 25 per cent.

After four months, unclaimed money reverts to the Thrift Shop. When the article is reduced less than \$1.00, it becomes shop property.



NCO CLUB

The NCO Open Mess is located in building 312, featuring a dining room, ballroom, bar, stag bar, and private party room.

The program embraces movies, stateside floor shows, children shows, card games and tourneys, and dance music nightly except on Mondays.

Coffee and tea are free at all times. Hours of operation: Monday through Thursday 4 to 11:30 pm; Fridays and nights before holidays, 4 pm to 1:30 am; Saturdays, 12 pm to 1:30 am; Sundays, 12 to 11:30 pm.

NCO WIVES CLUB

The NCO Wives Club meets bi-monthly at the NCO Open Mess. These meetings begin at 1:30 pm.

Business meetings for the club are held on the first Thursday of each month in the NCO Open Mess.

The third Thursday of each month is the social with two hours free nursery service.

The club's most important activities consist of providing free games for hospital patients and once-a-month visit to a local French orphanage.

OFFICERS' CLUB

The Evreux Officers' Open Mess, located in building T-137, has recently been renovated and is one of the most modern clubs in Europe. It compares favorably with most clubs in the United States, featuring charcoal grilled food, both American and European, and a long distance telephone service as well as all other normal services.

Evreux's club provides a well balanced entertainment program, including dancing, bridge, floor shows and special parties.

Restaurant hours for the club are 6 am to 9 am, 11:30 am to 1 pm, and 5:30 to 9:30 pm during the week days. On Saturday the hours are 7:30 am to 2 pm and 5 to 9:30 pm.

Cocktail lounge hours Monday through Thursday are: 5 to 11:30 pm; Friday, 5 to 1:30 am; Saturday, 12 pm to 1:30 am; and on Sunday, 12 pm to 11:30 pm. Holidays are the same as Sunday.



OFFICERS' WIVES CLUB

All OWC activities are held Wednesday in the Officer's Open Mess, however, the exception is a bowling league that meets on Tuesday.

The OWC sponsors Girl Scout activities and operates the Base Thrift Shop, in cooperation with the NCO Wives Club; a French orphanage is also sponsored by the OWC.

Many activities are available to OWC members. There are numerous tours, including the sights of the French countryside, large cities, and points of historical interest.

Tickets to famous fashion houses are available to members of the OWC.

The club may be contacted by calling 6402 or 6452.



RESERVE OFFICER'S ASSOCIATION

Officers stationed at Evreux-Fauville are invited to join the Evreux Chapter of the Reserve Officers Association. The ROA holds monthly meetings and receives command assistance.

During the early part of an officer's tour at Evreux, he will be contacted by a project officer from the ROA. Announcement of activities sponsored by the ROA will be publicized through the daily bulletin and the base newspaper.

AUTO HOBBY SHOP

For the mechanically-minded, Evreux AB has an Auto Hobby Shop available for local military personnel, their dependents and DAF civilians. The shop has ten maintenance stalls, a paint booth, engine re-building room and a large tool crib.

Modern testing equipment is available for use under the supervision of competent instructors. A nominal fee is charged for stall usage.

An additional item offered through the shop is a daily truck rental and a 24-hour wrecker service for which very moderate fees are charged.

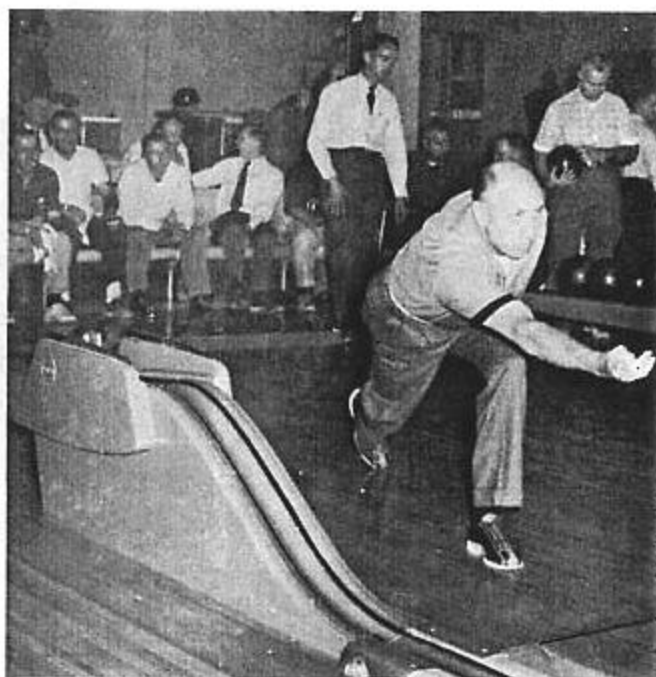
Hours of operation are:

Monday through Friday, 9:30 am to 12 pm--1 to 5 pm, and 6 to 10 pm. On Saturdays and holidays, 8 am to 12 pm, 1 to 5 pm, and 6 to 10 pm. Sundays, 1 to 5 pm, and 6 to 10 pm.



SCOUTING PROGRAM

The Evreux Girl and Boy Scouting program is all year around and encourages all boys and girls to join. The yearly program consists of meetings, summer camps, movies, camp-outs, field trips, and many varied activities. The yearly scouting projects are base magazine drives, toy drives, car washing, on base beautification services, calendar sales, and the collection of clothing for orphans.



BOWLING CENTER

The 12-lane bowling center here offers family-type atmosphere where all can enjoy wholesome exercise. Located on 4th and "D" streets, the center is open from 11:30 am to 11:30 pm Monday through Saturday, and 12 noon to 11 pm Sundays and holidays.

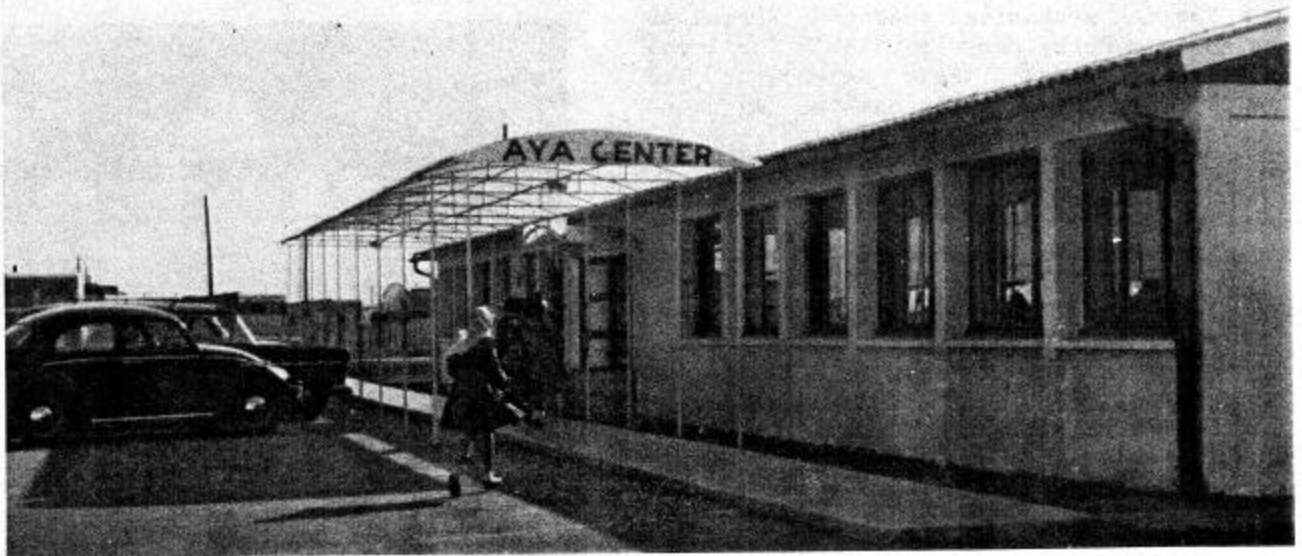
Local winter leagues usually begin in September for military organizations, independents, mixed couples, etc.

Special midget and junior leagues for children are available in conjunction with the AYA program. Several summer leagues are included in the same schedule as above.

The ABA-sanctioned bowling lanes, well-stocked snack bar and patio are for the use of the bowler. A ball measuring service is available, and free instruction given upon request. Lockers are available for a small monthly fee.

For tired bowlers and spectators, some refreshment may be enjoyed in the adjoining patio.

AMERICAN YOUTH ACTIVITIES



The Evreux American Youth Activities (AYA) program is broad and varied in scope. All U.S. military and civilian dependents from 6 to 18 are eligible to use AYA facilities. Programs are planned, developed, coordinated and administered by the youth director, with the assistance of volunteer leaders and supervisors of various youth organizations.

AYA activities are divided into a summer and winter program at the newly erected center, located in building 68.

The center is also available for AYA meetings and other related activities, when coordinated with the AYA director.

Activities of the program include arts and crafts, dancing classes, dramatics, summer camp, field trips and tours, hobby groups, social events, games and puzzles, indoor and outdoor recreational games and sports. Special groups meeting at the AYA include Boy Scouts, Girl Scouts, teen clubs, Evreux ACE Cadets, and religious groups.

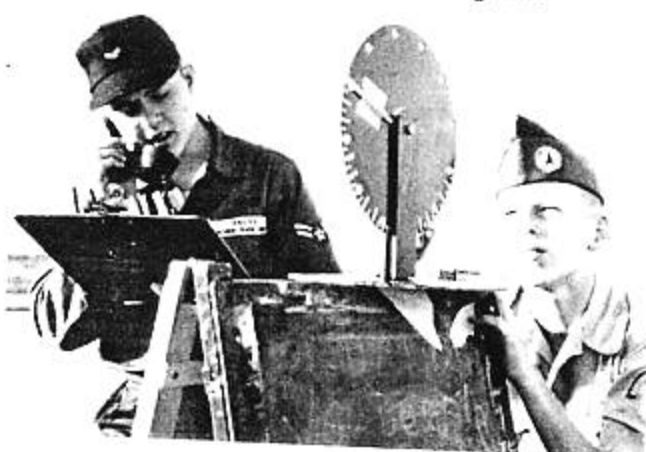


AEROSPACE EDUCATION

Designed with "aerospace education" in mind, the Evreux ACE Cadet Squadron, a unit of the Aerospace Cadets of Europe, is open to all dependents from 10 to 18 years old.

In addition to the Saturday afternoon meetings at the AYA Center, cadets may tour aircraft plants, visit an International Air Show, and launch their own model rockets at a nearby range.

Their motto "NASA Leads U.S. Ventures Into Space ... ACE Leads Dependent Youth to NASA," is indicative of their goal.



ATHLETIC PROGRAM

Evreux's athletic program is directed and supervised by the staff of the Base Athletic Department, with offices in the base gymnasium.

In Varsity Sports, the base is a new member to the France Sports Conference and competes against key bases in this area.

Base gym facilities are open to all military personnel, DAF civilians, and all dependents and include one basketball court, boxing and weightlifting areas, one handball court, a steam room, showers and dressing facilities, volleyball court, and two badminton courts.

Outdoor facilities consist of a combination football and soccer field, three softball fields, two tennis courts, and a baseball diamond.

SUMMER CAMPING

Camp Cazaux, France, an American Youth Activities Summer Camp, is located on the shores of a large fresh water lake in the pine forested resort area three miles from the resort city of Biscarrosse Plage.

The nearest large city is Bordeaux, some 50 miles to the northwest. Cazaux offers opportunities for swimming, boating, canoeing, handicrafts, campcrafts, cook-outs, campfires, and other summer outdoor activities.

Qualified permanent and program staffs to include water safety and medical personnel, are in charge throughout the season.

Camp season runs from mid-June through late August with sessions allotted to the explorers, Boy Scouts, AYA Boys, AYA Girls, and family groups. Camping instructions are published prior to each camping season with up-to-date camp information.

Other camps in both Germany and England are also available.

SQUARE DANCING

Friendship and fun is available to all couples at Evreux, through the Promen-8-ers club which is organized to promote and encourage modern square dancing.

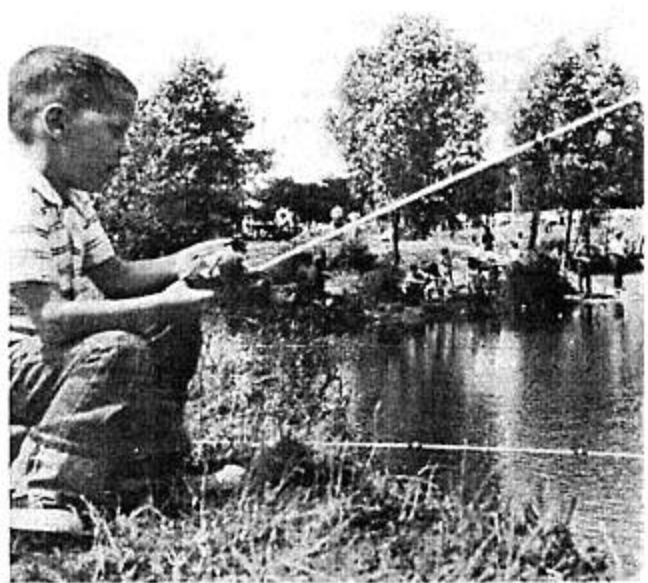
A weekly dance party is held at 8 pm Wednesday, in the auditorium of the Field Training Detachment building 458.

The Evreux Promen-8-ers club is a member of the European Association of American Square Dance Clubs.

Once every six weeks a French Association meeting and dance is held with one of the nearby sister clubs, the Paris Squares and the Jeanne d'Arc Quadrille of Orleans.

The square dancing today includes all kinds of music, ballads, jazz, latin rhythm and marches, that are adapted to group type movements.

ROD AND GUN CLUB



The Rod and Gun Club is located at the Sports Center and is open from 8 am to 8 pm daily except Sundays. All types and brands of hunting, fishing, and camping equipment, both foreign and U.S. are available or can be ordered from the sales department at reduced prices.

Some camping equipment may be secured on a rental basis. Camping trips are sponsored and conducted by the club.

The R&G club sponsors a nearby private lake which is kept stocked throughout the year with trout and bass. Lake facilities include a picnic area, sales store, children's recreation area, and frequent fishing contests.

A skeet and trap range has been equipped with the latest automatic traps in high and low houses. Also operated by the club is a golf driving range and putting green.

Many organized hunts are conducted each season.

Evreux Rod and Gun Club meets twice monthly. The program features regular business, movies and refreshments.

FIREARMS REGISTRATION

Personnel possessing firearms are invited to read USACOMZEUR Regulation 190-25, dated August 18, 1963, for procedures for proper registration. This information is available at the Pass and Registration office, building 115, telephone 6259.



MAIN STORE OF THE AF EXCHANGE

AFEX FACILITIES

The Base Exchange function consists of a Tailor Shop, Dry-Cleaning Pick-up Point, Barber Shops, Beauty Parlor, Delicatessen, Class VI and Beverage Store.

The Main Exchange carries a wide variety of merchandise including such items as military clothing, sport and casual wear, cosmetics, childrens wear, luggage, mail order section, jewelry, music department, and miscellaneous household items and gifts.

A spacious Snack Bar is located in the same building as the Service Club, building 143. There is also a Snack Bar in the Base Operations building and two roving Snack-Mobiles for the convenience of personnel who are unable to leave their duty sections for a period of time.



SERVICE STATION

An AFEX Service Station is available for the convenience of base personnel, and is located to the right as you enter the main gate. Minor auto repairs are performed on American automobiles.

French prices, off-base, for repairs are higher than prices in the U.S. and estimates of repairs should be obtained prior to contracting for work.

Common parts, plus many spare items are available at the Parts Store of the Evreux Service Station. Parts that are not in base stock may be ordered through this facility.

Check with the office, extension 640 for current operating hours.



AERIAL VIEW OF EVREUX-FAUVILLE AIR BASE



BASE LAUNDRY

The Base Laundry, building T18, is located on the periphery road, facing N-13. Hours of operation are 8 am to 6 pm Monday through Friday, and 8 am to noon Saturdays. Two types of laundry service are provided, flat-rate bundles and piece-rate service to individual patrons.

Flat-rate laundry bundles submitted by Wednesday noon are ready for pick-up Saturday. Bundles submitted Saturday are ready on Wednesday.

This bundle is composed of 25 pieces and the laundry bag is washed free, at the present cost of \$1.25. Not more than eight pressed pieces are authorized. Military patrons may include civilian garments of outerwear in the bundle, but not laundry for dependents or family flat work.

Pieces that exceed the limitation, or do not belong to the airman submitting, are laundered and charged for at the piece rate established for individual patrons.

In addition to the flat-rate laundry bundle, services are available to authorized individuals on a piece-rate basis.

Special one-day service may be obtained upon request for those customers requiring clean clothes immediately because of TDY, special duty, or some other unusual situation. Charge for this special service is basic price plus 20 per cent.

Dry cleaning service is provided under the same conditions outlined above for the piece-rate laundry service.

For the Family

WHAT TO BRING

In this part of the country, warm clothing is essential for the winter months. Although temperatures do not go as low as in the American midwest, the humidity is high and the cold penetrates.

A good supply of rain apparel, winter boots, wool dresses, warm robes, slippers, sleeping garments, slacks and kneesocks are essential for the children.

You will probably need just a few summer cottons for the few warm days, however, even during the summer, no matter how hot the day, the mornings and evenings are quite cool. Most of the essential items for children are available in the Base Exchange.

It is possible to buy on the economy, but prices are high, or you can always order merchandise from the states with the order taking from three to six weeks for delivery.

At La Madeleine, a Guaranteed Rental project and La Fayette Village, the new commodity housing, storage space is limited. Leave bulky and ornamental pieces of furniture in the United States.

The following electrical appliances operate on the current in the housing areas although transformers are necessary in rental guaranteed units:

Refrigerators, irons, electric ovens, waffle grills, sandwich grills, toasters, lamps, radios, and washing machines (agitator type, as most automatics will not operate satisfactorily because of the 50 cycle current).

Note: For radios, FM is required to receive Armed Forces Network stations. A TV set is not recommended due to the excessive work required to modify sets in order to receive French programs, which are the only types available.

PERSONAL AFFAIRS OFFICE

In conjunction with the required annual records check, Evreux personnel are counseled on matters of insurance, government loan voting, survivor's benefits, and retired serviceman's family protection plans.

The Evreux Affairs Control Branch also provides counseling to military members and dependents in connection with passport and visa applications.

Children born to servicemen stationed at Evreux, must be registered with the U.S. Embassy through the Base Personal Affairs Office.

Single servicemen who plan to marry during their tour, must receive premarital counseling from this office.

Registration of 18-year old male dependents for selective service is accomplished with the aid of the Affairs office, building 119.

PROJECT CHAP

The Air Force established Project CHAP (Children Have A Potential), to provide information, guidance, or financial assistance to Air Force families with physically or mentally handicapped children under 21 years of age.

Evreux's Family Service Advisory Council has the responsibility for administering this program.

The Affairs office maintains a library of information of CHAP facilities which are available at bases throughout the world.

A special section in the Base Library is devoted to CHAP and contains many excellent books which will benefit parents of handicapped children.

HOSPITAL AT ST. MICHEL

MEDICAL FACILITIES

MEDICAL SERVICES

The 317th Tactical Hospital, considered one of the finest medical facilities in Europe officially opened November 1, 1960.

Located in St. Michel, on the western edge of the city of Evreux, and seven miles from Evreux-Fauville AB, the AF Hospital is equipped with the latest medical equipment and is designed to house 300 patients.

Medical services available at the hospital include obstetrics, radiology, pediatrics, otolaryngology, ophthalmology, general surgery, internal medicine, gynecology psychiatry, and optometry.

In addition to the main hospital unit, there are NCO and airmen's quarters, a new maintenance shop, fire station, nurses quarters and an NCO Open Mess Annex. Patients have the use of an AFEX branch, a barber shop, a beauty shop, and a small chapel.

Appointments: Appointments for medical care may be made as follows: From the base, dial "9" to obtain hospital switchboard (wait for the dial tone), then dial 214 or 221 for the appointment desk.

From commercial phones dial or ask the French operator for Evreux 1435, 1664, or 1665 to obtain hospital switchboard, then ask for the appointment desk.

Dental Clinic: There are two dental clinics in the area, one is on the base and one at the St. Michel hospital. The base's dental clinic takes care of military personnel only.

Ordinary dental procedures both at the base dental clinic and at the hospital are handled by appointment.



Dental sick call hours for military personnel are 8 am to 9 am, Mondays through Fridays, call 7205.

Dental sick call for dependents and other eligible non-military personnel are 1 to 2 pm, Mondays through Fridays (hospital) call 9-220. This clinic also handles other eligible non-military personnel.

Specialties available include general dentistry, oral surgery and periodontia.

Veterinary: The base veterinarian supervises food inspection and sanitation for this installation. The water supply at La Madeleine and La Fayette housing areas is considered safe.

Personnel living on the economy, in order to make their water safe for use, should boil it for a minimum of three minutes or treat it chemically with iodine tablets or ten drops of chlorine for every gallon of water. In most large cities water is considered safe.

Medical care of pets is afforded on a minimal charge basis.

THE SURROUNDING AREA

"Getting away from it all" will prove no problem due to the excellent transportation in the area.

The railway station located downtown Evreux makes either Paris or Cherbourg a matter of a few hours travel, and the French National Highway 13, alongside the base, makes auto travel to Paris, Rouen, Deauville and Trouville, plus other interesting spots, easy and pleasant.

For the first few months at Evreux, you will probably want to spend most of your leisure time getting acquainted with Paris and Normandy.

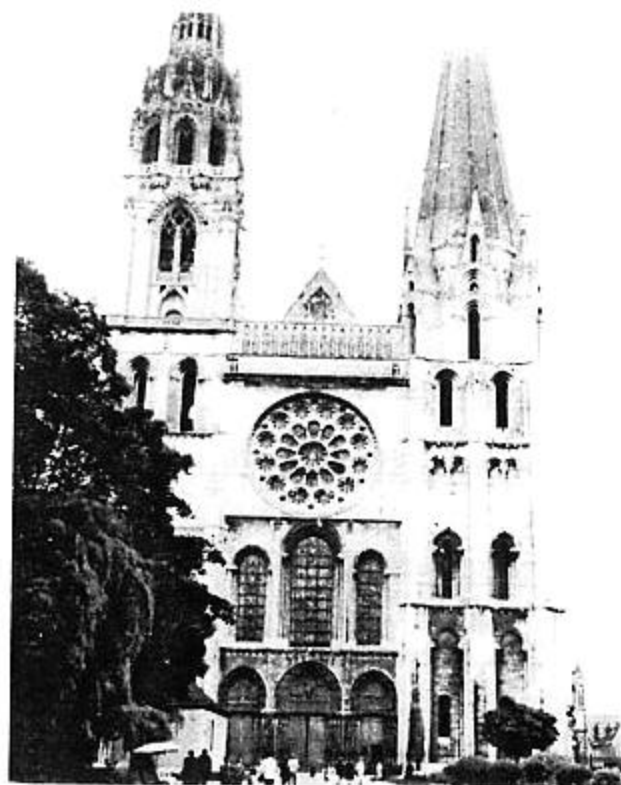
There is a wealth of interesting travel possibilities right in this area of France. The following are just a few examples.

Chateau Gaillard: The medieval castle of Richard Coeur de Lion (Richard the Lion Hearted) is perched high on a hilltop near the town of Les Andelys, about a thirty-minute drive from the base. The castle is partially in ruins, but the total effect and its surrounding scenery leaves the observer in awe.

Deauville and Trouville: These twin cities present one of the most beautiful beach resorts in France. They are about an hour and a half drive from the base. There you will find a wide beach, beautiful but sometimes expensive, hotels and good fishing.

Versailles and Malmaison: Located 11 miles from Paris, Versailles is the most magnificent palace in all Europe. To see it adequately, we suggest you plan to make two trips.

Fontainebleau: Located south of Paris, a world famous palace that is second only to Versailles in splendor. It is considered by many as more beautiful because of its interior decoration.



The Cathedral at Chartres: Only about an hour's drive away, this cathedral is famous the world over for its stained glass as well as its architecture.

Paris: We will not even attempt to discuss Paris herein, because it would require several books to do it justice. There are a number of excellent guide books available at the base newsstand, in English, which assist in getting acquainted with the grand "City of Lights."

Omaha Beach: Situated on the Normandy coast, this spot is especially interesting to Americans because it is the site of the D-Day invasion, and the American Military Cemetery. Nearby Arromanches has an interesting museum which traces the remarkable history of the invasion.